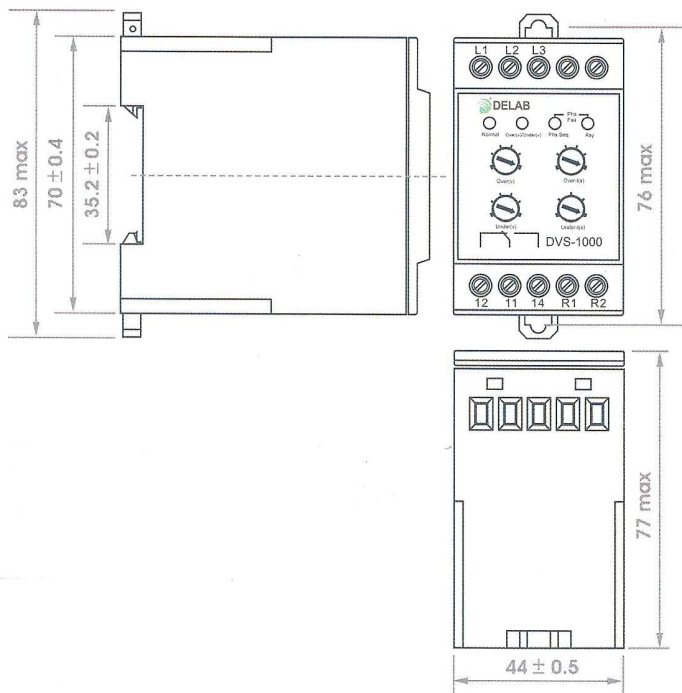


DVS-1000

VOLTAGE MONITORING RELAY

FEATURES



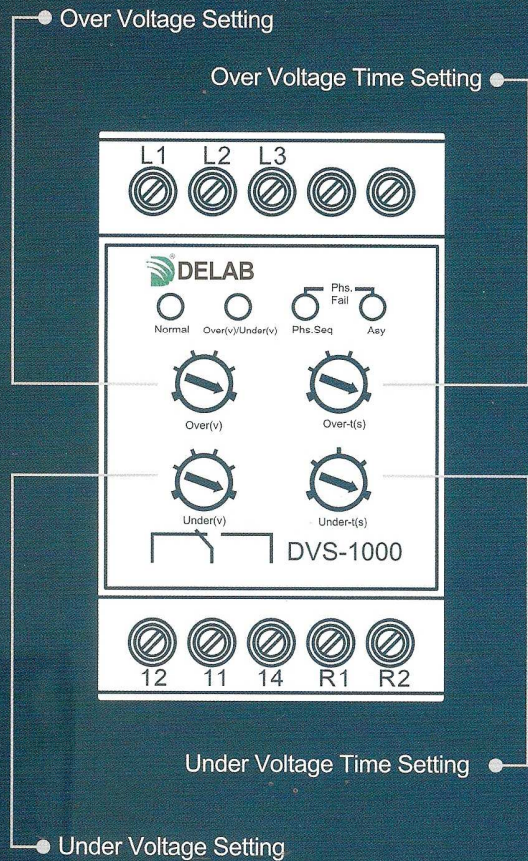
- True RMS measurement
- Over / Under voltage monitoring
- Phase asymmetry monitoring
- Phase failure monitoring
- Phase sequence monitoring
- Trip LED indicator
- Adjustable Over / Under voltage settings
- Auto-reset
- Din-railed mount

Models available : DVS-1000 (3 Phase, 3 Wire)
 DVS-1000 (3 Phase, 4 Wire)

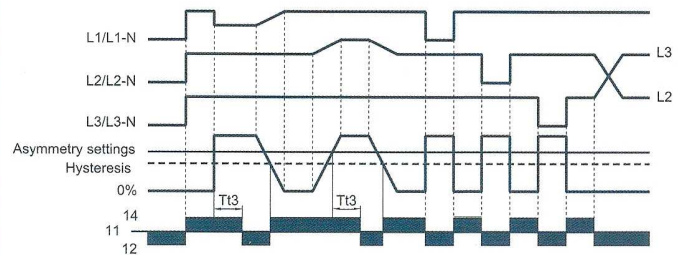


PANEL DESCRIPTION

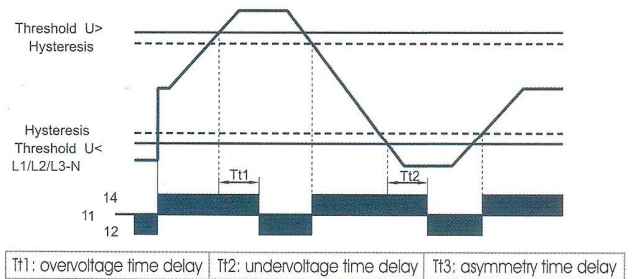
FUNCTION DIAGRAM



Phase asymmetry, phase failure, phase sequence monitoring



Overvoltage and Undervoltage monitoring



TECHNICAL DATA

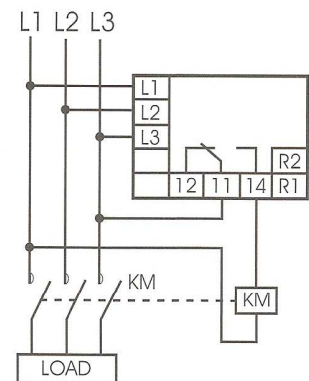
Measurement	True RMS Ampere
Rated Voltage supply	240 Vac $\pm 10\%$, (3 phase 4 wire) 415 Vac $\pm 10\%$, (3 phase 3 wire)
Rated frequency	50 Hz
Output Contact	1 C/O contact
Contact Rating	AC-15 240V / 1.5A, 415V / 0.95A
Weight	approx. 210 g
Operating temp.	$-5^{\circ}\text{C} \sim +40^{\circ}\text{C}$
Storage temp.	$-10^{\circ}\text{C} \sim +55^{\circ}\text{C}$
Enclosure Protection	IP20
Standard	EN/IEC 60947-5-1

SETTING RANGE

Over voltage setting	250 ~ 310 Vac $\pm 1\%$, (3 phase 4 wire) 430 ~ 530Vac $\pm 1\%$, (3 phase 3 wire)
Under voltage setting	170 ~ 230 Vac $\pm 1\%$, (3 phase 4 wire) 290 ~ 390Vac $\pm 1\%$, (3 phase 3 wire)
Delay time setting	0.1 ~ 10.0 sec $\pm 1\%$, (Over/Under voltage) 2.0 sec Fixed (asymmetry trip) < 1.0 sec (phase failure/phase sequence trip)

WIRING DIAGRAM

3 phase 3 wire



3 phase 4 wire

